

Torpedo Triple

The Torpedo Triple range of recycling stations are ideal for use in busy locations such as schools, colleges, universities, offices and shopping centres as they allow the collection of three different waste streams in three large individual compartments.

The units are manufactured from 2mm galvanised steel making them extremely tough and durable and a key feature is the dual hinged doors with invisible magnetic door catches. This system allows quick and easy access to the triple liners inside and makes emptying much quicker and simpler.

A wide range of WRAP iconography fascias are available to suit your recycling requirements. The fascias are attached to the top of the unit and clearly indicate what is being collected in the bin.

The Torpedo Triple range consists of four versions



Torpedo Triple
Height: 910mm
Width: 1000mm
Depth: 430mm
Capacity: 162 Litres
Weight: 60 kg



Torpedo Triple XL
Height: 1065mm
Width: 1000mm
Depth: 533mm
Capacity: 270 Litres
Weight: 70 kg



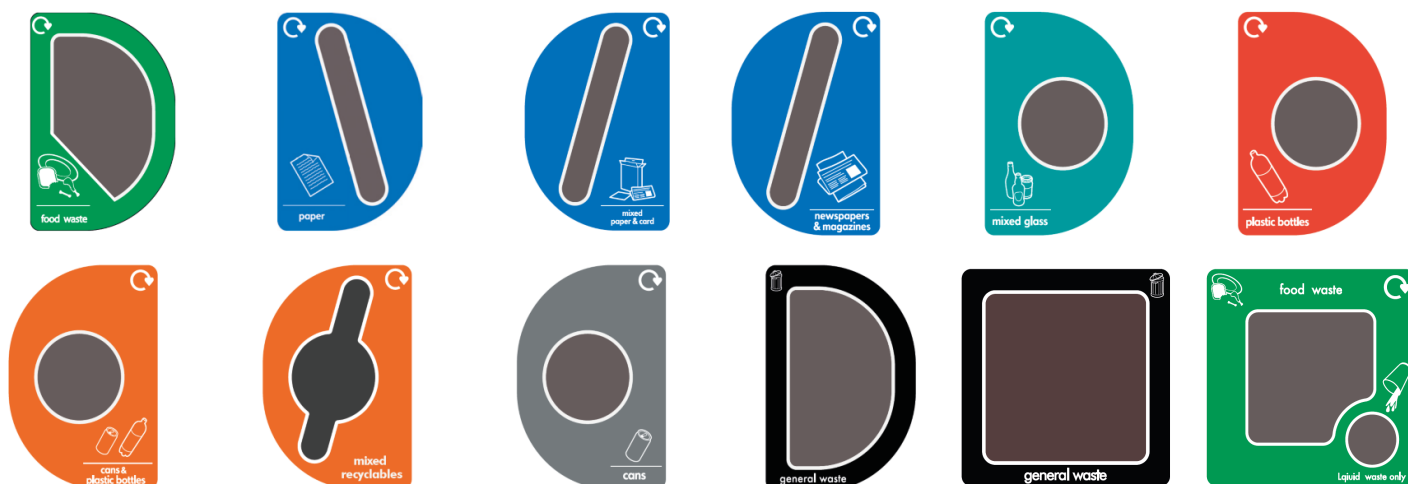
Torpedo Transparent
Height: 910mm
Width: 1000mm
Depth: 430mm
Capacity: 162 Litres
Weight: 60 kg



Torpedo Triple with Orbit Hood
Height: 1245mm
Width: 1100mm
Depth: 633mm
Capacity: 270 Litres
Weight: 80 kg

Fascia Options

Torpedo Triple units have a wide range of fascia plates available featuring WRAP artwork, iconography and colours with apertures to match. All fascia are available as either left or right hand or central plates.



Optional Extras



Message Board

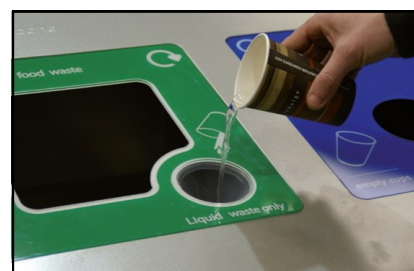
A message board can be added to the Torpedo Triple and this can be used to display vinyl stickers, magnetic labels or poster frames.



Liners on Castors*

Castors are added to liners to aid manoeuvrability.

*This option is available upon request only



Liquid Collection Tube

If the food waste with liquid collection fascia is selected, an additional aperture is added to the fascia plate for collecting liquid. It also includes a liquid collection tube and this is fixed to the liner using magnets.

Artwork

A4 (210 x 297mm) vinyl stickers positioned on the front of the body to make your waste stream visible.



Kingfisher Direct Limited, Unit 12, Retford Enterprise Centre

Randall Way, Retford, Nottinghamshire, DN22 7GR

Tel: 01777 858009 Fax: 01777 858010